



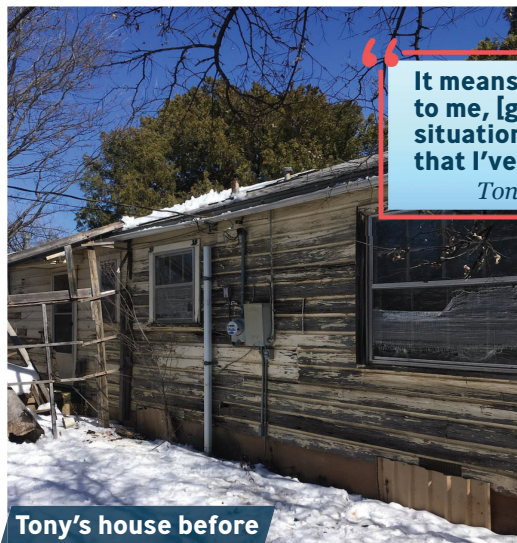
COMMUNITY
FOUNDATION
of ABILENE

Empowering people to make a lasting charitable impact on our community.

JUNE 2021

IMPACT NEWSLETTER

Stories of impact from the year so far, thanks to our donors and the power of endowment.



Tony's house before

“It means the world to me, [given] my situation...all the help that I've received.”

Tony Spagnoli



Tony's house after

Jeff Smith (L) with Boots on the Ground shows Tony (R) the progress on his house.

Winter Storm CFA DONORS RESPOND

The brutal winter storm in February caused widespread damage and altered livelihoods for thousands of Abilenians.

The pipes at Tony Spagnoli's home burst, and the heavy snow and ice worsened existing punctures in the roof and siding. He was left without running water or much warmth.

For Carole Morton, pipe corrosion and an already-slumping floor left her and her husband without a usable bathtub or toilet.



Carole volunteering at Disability in Action

“It's such a blessing. And the guys they sent out, the volunteers, oh my gosh, they were wonderful!”

Carole Morton

Thanks to CFA donors, the power of endowment, and charitable organizations offering emergency response, Tony, Carole, and dozens of others received much-needed home repairs and financial assistance. When CFA established a relief fund, our donors stepped up to contribute. We granted more than \$188k to nonprofits serving people in need of assistance.

Much of this funding went to Boots on the Ground, an organization that provides emergency disaster relief, primarily for people who are uninsured and/or cannot afford repairs. Boots on the Ground worked with plumbers, roofers and volunteers to fully restore the damages to Tony's home and Carole's, even enhancing them beyond basic repairs.

Our donor-advised fundholders are often best positioned to respond during an emergency because of the sustainability an endowment fund provides. CFA's investment team works hard to strategically invest the gift used to establish a fund. This allows the fund to grow over time, giving donors the flexibility to recommend grants from their funds as needs arise.

See their video
story at

cfabilene.org/impact



New Scholarship Fund Honors Beloved Wife & Mother

Following the recent death of his wife, Karen, James Price and daughter Candice McCray decided to create a scholarship endowment fund to honor Karen's legacy.

The new scholarship is called The Karen Adair Price Registered Nurse (RN) Scholarship Fund. The endowment provides financial assistance to college students majoring in a health science nursing degree program, a tribute to Karen's passion for serving patients during her nursing career.

"Karen and I were married for more than 56 years – we were high school sweethearts in the beginning," said James Price.

"My daughter, Candice, and I know Karen would be very pleased with her working legacy, and as a consequence, more future nurses will be available to care for those in need. This endowment also 'gives back' to our community a sense of commitment and fellowship. God bless all of our 'Front Line Heroes'!"

Remembering Weeze Daniel

BELOVED FRIEND OF THE FOUNDATION



L to R: Amy Evans, Billye Proctor-Shaw & Weeze Daniel at CFA Friends Breakfast, 2005

The story of Frances Hill "Weeze" Daniel is one of love for her community and compassion for people in need. Weeze passed away May 2, 2021 at the age of 102, a number that represents decades of charitable impact in Abilene.

Weeze was a longtime Friend of the Community Foundation and CFA fundholder. Through grants from her unrestricted and donor-advised endowment funds over the years, Weeze supported initiatives to feed and house people, educate local children and youth, provide healing for the sick, and much more.

"Weeze was an amazing woman who cared deeply about making our community a better place," said CFA President/CEO Katie Alford.

"She had a fun and lively spirit, too, even at the age of 100! I remember joining her at Wesley Court for a drumming session, where she and her friends would make music together using exercise balls as drums. Weeze was one of the Foundation's most devoted Friends and will be dearly missed. I am forever grateful for all that she contributed to CFA and to Abilene."

Weeze Daniel's legacy story will most certainly live on for years to come.

Find out how Weeze got her nickname at cfabilene.org/blog

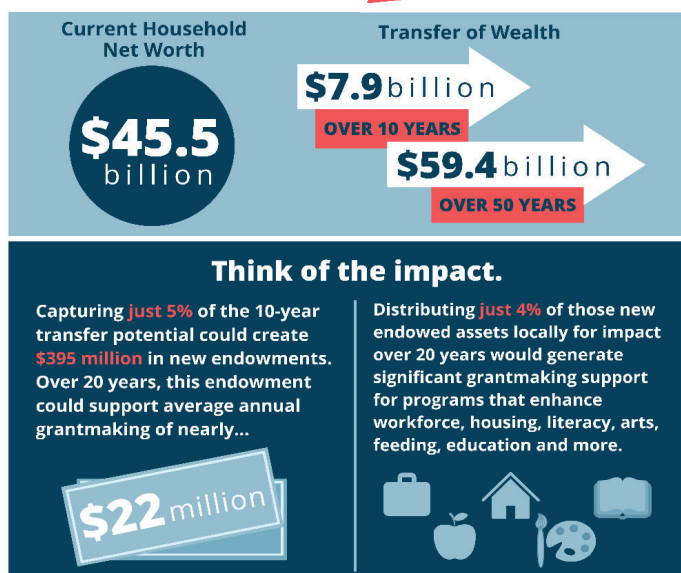
Imagine if we all left at least 5% to charitable causes in our community.



Leave 5 is a new CFA-led initiative to encourage people to pledge to leave at least 5% of their estates to the charitable causes they love.

We commissioned a study showing the potential transfer of wealth within our five-county region (Taylor, Nolan, Runnels, Shackelford and Coleman) over the next 10-50 years. The box to the right gives a glimpse of the potential impact we can make on our communities.

Learn more, see testimonial videos, and take the pledge at: leave5.org



\$1.9 MILLION



Abilene Gives raised nearly \$2 million for local nonprofits this year! This was CFA's fifth year to host the 24-hour day of giving to raise funds for local charitable causes.

Funds poured in from a number of sources - individual donors, sponsors, and CFA's donor-advised fundholders.

In fact, our fundholders made a significant impact on the totals, granting more than \$567,000 from their funds to the causes they care about!



How Donor-Advised Funds Work

1

Make a donation to establish the fund. You can choose what to name it.



2

CFA invests the gift to protect and grow the endowment for long-term sustainability.



3

Grants are made each year from the fund's revenue. You choose where the grants go.



Thanks to the power of endowment, grants from your fund can eventually exceed the amount of your original gift!

Small Business Relief Grants

HELPING LOCAL BUSINESSES OVERCOME THE EFFECTS OF THE COVID-19 PANDEMIC



COMMUNITY FOUNDATION of ABILENE



Grant recipient Jorge Luis, owner of Don Luis Cafe



Grant recipients Troy & Traci Fulgham, owners of 5 Star Coatings

Abilene small businesses bore the brunt of the COVID-19 pandemic, and they proved to be resilient. To help provide relief, CFA has partnered with the City of Abilene to administer grants to small businesses that took a financial hit in 2020. The City received funding and guidelines from the U.S. Department of Housing and Urban Development (HUD), and CFA has stepped in to manage the grantmaking process.

"We've been working so hard," said Don Luis Cafe Owner Jorge Luis, who received a \$40,000 grant. "To get this grant is like a light at the end of the tunnel! We don't have to worry about how we're going to pay people in the next two months... To have that, it's just amazing. It takes some of the pressure off yourself."

CFA began with around \$500,000 to grant to local businesses. We granted out more than half of the funds during the first round of funding in May, and the remainder will be granted out during the second cycle, happening right now.

Applications for round two of funding are open through June 30.

Find application information and see all eligibility requirements at cfabilene.org/small-business.



COMMUNITY
FOUNDATION
of ABILENE

PO Box 1001 • Abilene, TX 79604

Board of Trustees

Jeff Blanks, Chair

Yvonne Batts

Carolyn Beckham

Lisa Chavez

Bud Darby

Laurie Eagle

Deonna Galbraith

Lee Hampton

David McQueen

Chris Montoya

Ian Nickerson

Mindy Patterson

Steve Senter

David Swearingen

Sam Vinson



Recipients of the 2021 Big Country Athletics
Hall of Fame Scholarships

Congratulations, 2021 Scholarship Recipients!

Each year in May, CFA awards college scholarships from our donors' scholarship funds to local graduating high school seniors. This year, we awarded \$521k in scholarships to 175 students in Abilene and surrounding communities.

Donors who establish scholarship endowments get to determine the criteria for the scholarships awarded from their funds. Scholarships can be designated for students from specific school districts, students pursuing a particular career field, those attending specific universities, or other criteria.

Learn about scholarships
and other fund types at
cfabilene.org/fund-types

welcome, new board
members!

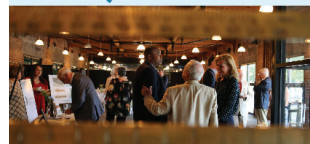
We are pleased to welcome these new
trustees, joining the board in July:

Jason Hall | Melody Hunt
Sue Schackmuth | Liz Wagstaff

cfabilene.org/our-team



We ♥ our Friends



Friends of CFA & Future Fund

Did you know it's \$200/year to become a Friend of the Community Foundation of Abilene and \$250/year to join Future Fund?

Learn more about both membership groups and what they make possible at cfabilene.org/friends and cfabilene.org/futurefund.

UPCOMING DATES: Jul 8: Future Fund Party • Sept 1: Friends of CFA Lunch • Nov 11: Annual Luncheon